



Outline

- * MWSS
- * CONCESSIONAIRES
- * WATER SECURITY PROGRAMS
- * CHALLENGES

MWSS Mandate / Mission

- *MWSS was created in 1971 under R.A. No. 6234 which has jurisdiction, supervision and control over all waterworks and sewerage systems within Metro Manila and some cities/towns in nearby provinces of Cavite and Rizal for a total service area of 1,940 sq. km.*
- *Ensure uninterrupted adequate supply and equitable distribution of safe potable water at an affordable price in an equitable manner.*
- *Contribute to public health and safety through the maintenance and improvement of the urban environment and securing of a sanitary environment.*
- *Secure environmental conservation to preserve the quality of human life and ecological systems and prevent ecological deterioration and pollution.* ³

MWSS VISION

MWSS is the prime mover and guardian of water security providing adequate, safe, reliable and affordable water and sewerage services to Metro Manila and its existing and future coverage areas, while ensuring the sustainability of its water resources and the intelligent and right use of water.

MWSS MISSION

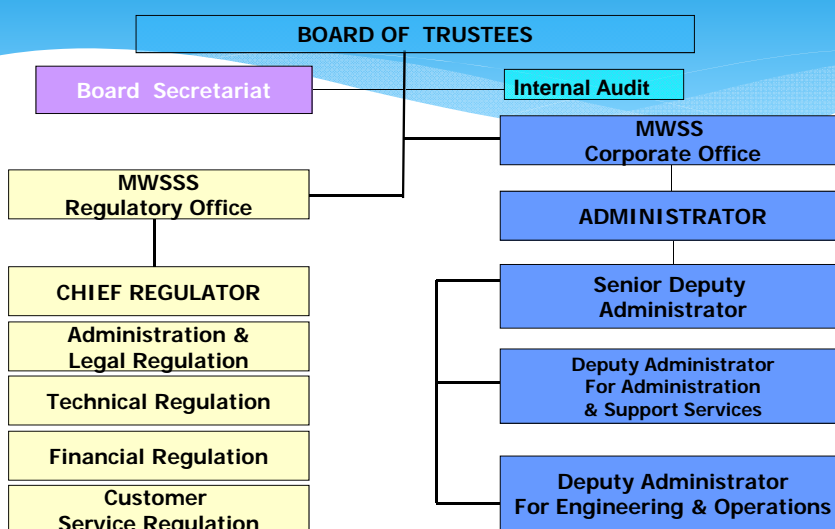
For Metro Manila and its adjacent towns:

- *Protect, secure, optimize and expand our water sources, their watersheds and infrastructure*
- *Provide equitable access to clean, potable and affordable water*
- *Aggressively increase the coverage of sewerage disposal system*
- *Ensure prudence and efficiency in the implementation of all our plans, including those we accomplish through our agents concessionaires, and in doing so, deliver affordable tariffs that will support the long term water supply program for Metro Manila and all covered areas.*

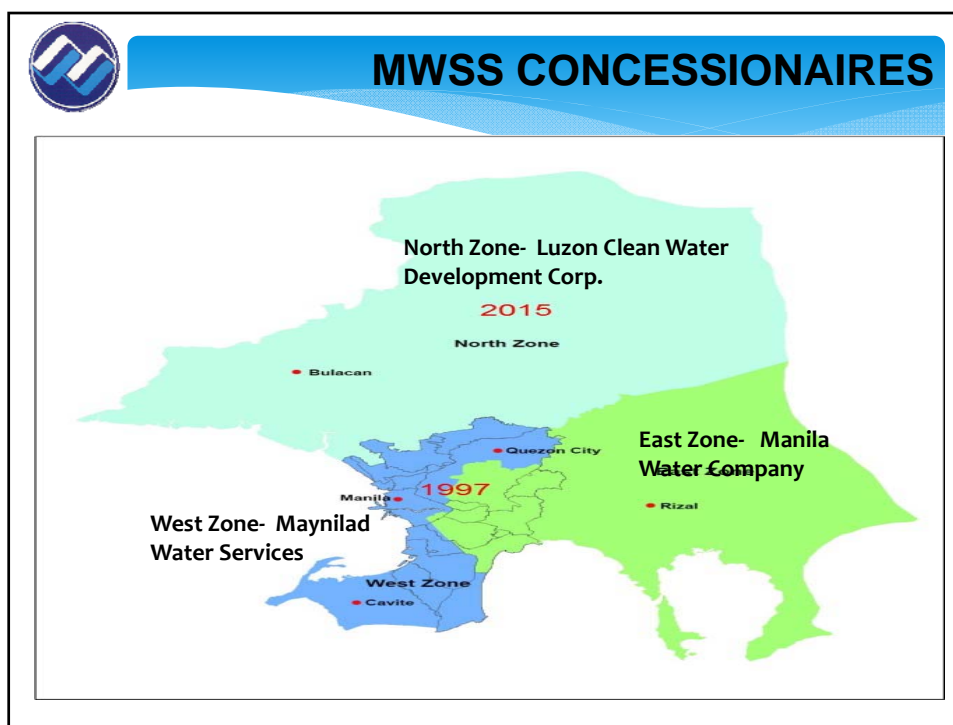
For our Employees:

Inculcate respect in meaningful roles and contributions as part of nation building to the inter-generational legacies being pursued by the Corporation.

PRESENT MWSS ORGANIZATION




Total No. of Plantilla Positions CO =153



East and West Zones

Distribution, Management and expansion turned over on August 1997
 Assets still belong to MWSS, existing loans being repaid by Concessionaires
 Original Concession period -25 years or up to 2021
 Term Extension of CA – 15 years or up to 2037




EAST ZONE:
1997

- Ayala (Philippines)
- United Utilities (UK)
- Bechtel (USA)
- Mitsubishi (Japan)

2006

- Ayala (Phil)
- United Utilities (UK)
- Mitsubishi (Japan)
- BPI Capital
- IFC
- MWCI Employees/Public



WEST ZONE:
1997

- Benpres Holdings (Philippines)
- Lyonnaise des Eaux (France)

2007 (turn-over to new operator)

- DMCI-MPIC = 84%
- Deutsche/Noonday = 16%

