

SILK ROAD'S SUSTAINABILITY CONCEPT

ASGHAR M. FAZEL
21 JULY 2016
BALI - INDONESIA

GLOBAL CHALLENGES

Interlinked challenges:

- climate change,
- poverty,
- peace and security,
- water issues,
- habitat destruction
- and biodiversity loss

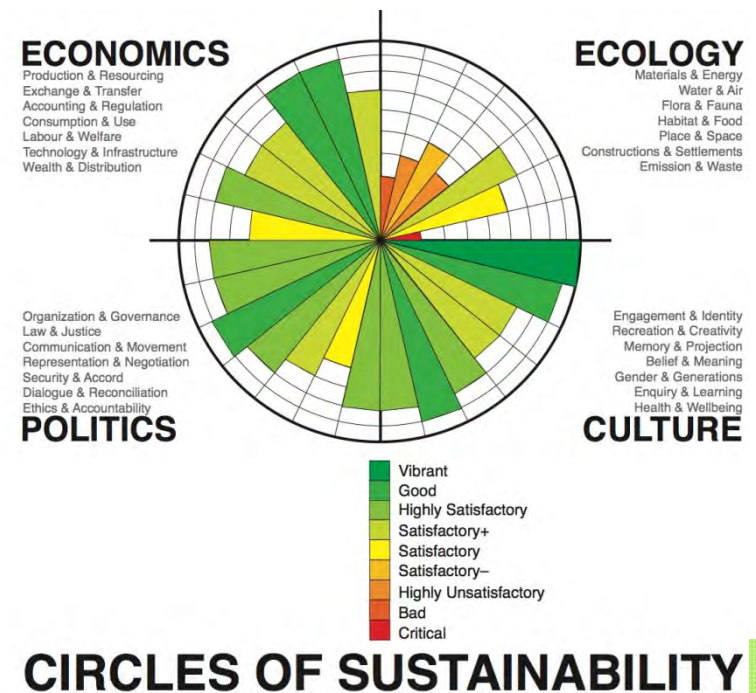


Credit: Science Word Clouds!

DIVERSITY + INTERCONNECTIVITY= SUSTAINABILITY

Lessons from nature:

- genetic diversity,
- migrations for food and water,
- adaptation to changing climates
- resiliency of plants, animals and ecosystems

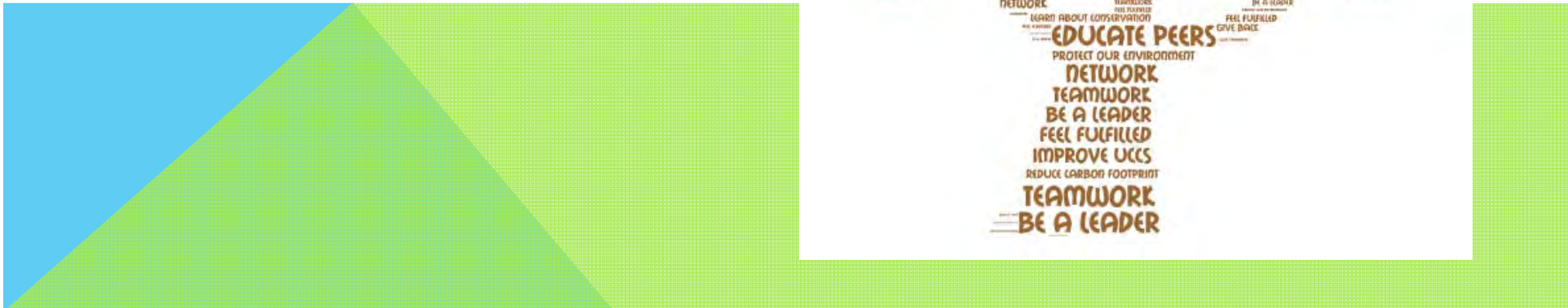


Source: assessment Melbourne 2011

SILK ROAD SOLUTIONS

Borderlessness in solutions:

- Transboundary wilderness conservation
- Geopolitics of regional peace
- Social exchange
- Economic support



SILK ROAD FOSTERING COLLABORATION

NETWORKING:

- B2B
- S&T
- Socio-econo
- Biodiversity

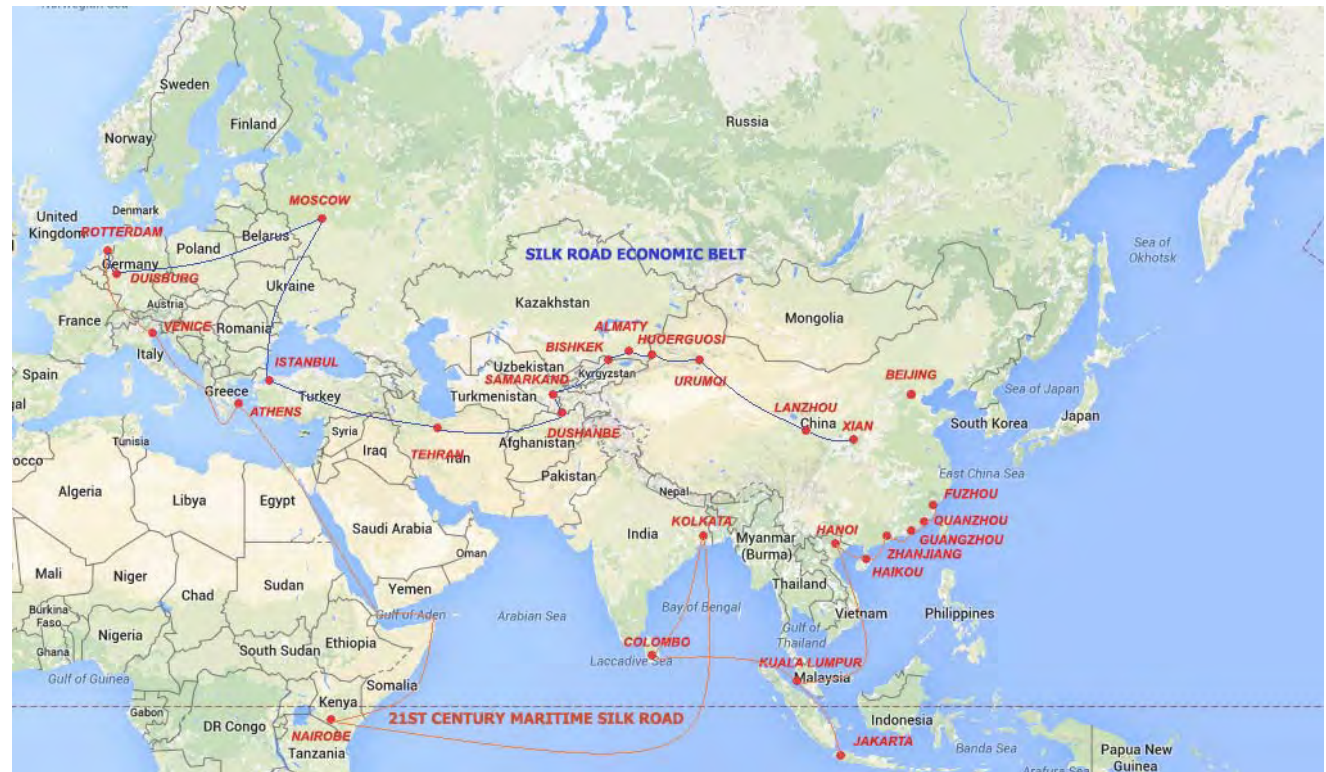
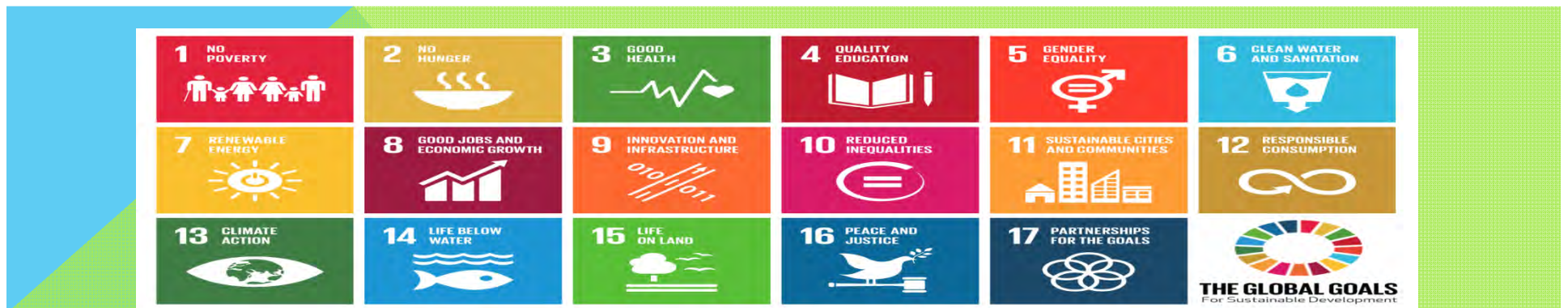


Photo credit: HKFP

SILK ROAD RESPONSE TO SDGS

1. No Poverty
2. Zero Hunger
3. Good Health and Well-being
4. Quality Education
5. Gender Equality
6. Clean Water and Sanitation
7. Affordable and Clean Energy
8. Decent Work and Economic Growth
9. Industry, Innovation and Infrastructure -
10. Reduced Inequalities
11. Sustainable Cities and Communities
12. Responsible Consumption & Production
13. Climate Action
14. Life Below Water
15. Life on Land
16. Peace, Justice and Strong Institutions
17. Partnerships



WWW.ECO-IEST.ORG

ASGHAR.FAZEL@ECO-IEST.ORG

THANK YOU